

New Kroll Ontrack Inview 7.0 Continues a Trend

By Sean Doherty

23 March 2011

Law Technology News

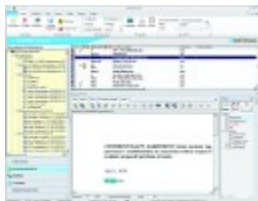
A trend from the last two LegalTech New York shows continues: vendors are making software easier to use by enabling feature-rich interfaces in simple, intuitive designs. The most recent example: the new release of Kroll Ontrack Inview 7.0 document review software.

When lawyers manually opened boxes laden with paper and reviewed their contents by hand, the most challenging part of discovery was the physical aspect of organizing documents for review and identifying the material most relevant to propel or defend a lawsuit. As discovery turned to e-discovery, a new challenge was presented to lawyers in using software to review documents, which was not as natural or intuitive as turning over documents by hand. Kroll Ontrack aims to increase efficiency and make document review software easier to use with the new release of Ontrack Inview.

Ontrack Inview 7.0 continues to support Kroll Ontrack's Intelligent Review Technology that was added to version 6.5. IRT includes workflow and document prioritization features, as well as "intelligent categorization" that aims to analyze review decisions made by trainers and make categorization recommendations for documents yet to be reviewed.

YOU CAN LEAD A HORSE TO WATER

Vendors can streamline and automate workflow and attempt to put the right documents in front of lawyers to review, but if the actual "review" part is hard or distracting, lawyers may never see what they are being paid to seek in document review. To make it easier, Inview 7.0 has some new features.



Kroll Ontrack Inview home tab.

Like Microsoft Office, the Inview 7.0 puts tasks in logical groups and makes them available from a ribbon bar, adding more right-click options. Kroll Ontrack hopes customers get faster access to commonly used features. In addition, version 7.0 supports dual monitors for additional screen real estate and comes with new customization features like dockable viewing panes, as well as drag-and-drop functionality.

The new user interface and its enhanced usability and customization features are also available in Ontrack Advanceview, which is an early data assessment tool in litigation and regulatory matters.